

The EES...

Entry/Exit System (EES) Automated Self-Service System

...provides for



- automatic registration of non-EU nationals each time they cross a Schengen external border
- gradual reduction in waiting times at passport control
- simplification and automation of border procedures

...applies* to



- non-EU nationals travelling for a short stay of up to 90 days within a 180-day period
- ➔ visa-required travellers
➔ visa-exempt travellers

* Some exceptions apply.

...collects** your



- full name, date of birth, nationalities, sex
- travel document
- facial image and/or fingerprints



** Data collection and recording will be gradually introduced at border crossing points from 12 October 2025, with full implementation by 10 April 2026.

...records** the



- date and place of entry into and exit from a European country using the EES
- refusals of entry, if this is the case

Entry
Exit
System

1

Where available, travellers with a biometric passport can present their travel documents at self-service systems. Border guards will help and/or oversee the process



2

The traveller must provide their documents and biometric data (facial images and fingerprints) at the self-service system



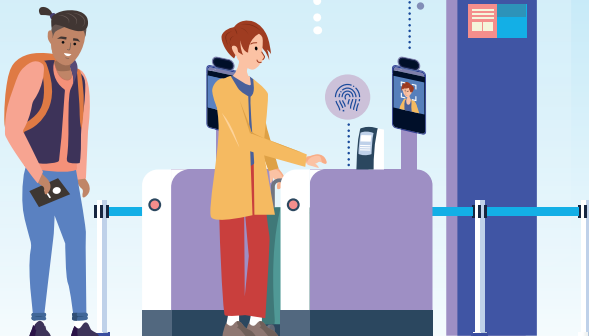
3

A border guard will verify the information received through self-service system, ask questions if needed, and then authorise or refuse entry to the traveller, which will be recorded in the system



4

The traveller benefits from a smoother and more efficient border crossing process



#TravelToEurope

Scan the QR code to learn more ▶

